

Bronte Harbour Yacht Club 2011 Club Racing Program

Contents:	2011 Sailing Instructions	2
	Course Illustrations	8
	Suggestions for Good Racing	9
	BHYC Race Schedule	10

Sailing Committee:

Rear Commodore of Sail	Jim Pollock
Grad Dewar (RC)	Jamie McCorkindale (FS3)
Richard Bissonnette (NFS2)	Peter Kirkwood (FS3)
Ron Barr (FS2)	Barry Jasper (FS1)
Larry Jensen (FS2)	Grant Moffat

Club Handicappers:

Glenn Freeman	Dan Martis
George Thompson	

Protest Coordinator:

Glenn Freeman

GHYRA Representatives:

Barry Jasper	
--------------	--

TGIF Coordinators:

Natalie Bullard	Bill Bullard
-----------------	--------------

It takes a great deal of volunteer hours to organize and run our racing program. I would like to sincerely thank all of those individuals who give so much to allow everyone to pursue their passion. A safe and enjoyable season to all.

Jim Pollock

Sailing Instructions

Bronte Harbour Yacht Club – 2011 Club Racing

1. Rules

These races will be governed by the Racing Rules of Sailing, the prescriptions of the Canadian Yachting Association and these Sailing Instructions. These series are designated as Category C events. All boats must carry a copy of the current Sailing Instructions and a copy of the current 2009-2013 Racing Rules on board at all times.

All boats in Division 3 shall comply with the Shark Class Association Rules (with the exception that motors may be carried on the transom)

All boats in Divisions 1, 2, 3b & 4 shall comply with the rules of the Lake Ontario Performance Handicap Racing Fleet and must hold a currently valid PHRF-LO rating certificate, a copy of which must be on file with PHRF-LO and show as valid on the PHRF-LO web page. A boat in these classes will not be scored unless the Club Handicappers have received a rating application prior to the boat racing. *Note that in order for your Certificate to be valid, it must be signed by the owner, a copy must be on board while racing and the Cert. must show on the PHRF-LO website.*

2. Authority and Responsibility

All races held as part of the regular racing program are organized under the authority of the BHYC Sailing Committee. The Club provides the opportunity for members to participate in the Racing Program; however it is the sole responsibility of each yacht to decide whether to start or to continue in any race.

3. Registration and Eligibility

3.1 In order to be scored in any Club race, a boat must be owned and/or chartered by a BHYC member and must be registered on a 2011 Race Entry Form, filed at least 48 hours prior to that race. Race Entry Forms are available on line and at the Club bar and should be delivered there, addressed to the Rear Commodore of Sail. Substitute boats in a series will not be permitted.

3.2 All boats must carry a minimum third party liability insurance of \$2,000,000. Each registered boat must provide proof of insurance by providing the Race Committee with a Certificate of Insurance, issued by the skipper's broker, or a copy of the Declaration page on the policy (this page will contain all the pertinent information). It is mandatory that the policy be in force for the entire racing season. If the policy expires during the racing season, it is the skipper's responsibility to file documentation with the Race Committee **confirming the insurance coverage has been renewed**. Failing to confirm renewal of insurance coverage may nullify all race results.

4. Guest Boats

Guest boats wishing to race must report their intention to the Race Committee before the warning signal. The Sail Committee may, at its discretion, limit the number of races in which a guest may compete.

5. Notices to Competitors

Notices to competitors will be posted on the Sailing Notice Board in the lower hall of the Clubhouse.

6. Changes in the Sailing Instruction

Any change in the sailing instructions will be posted on the Sailing Notice Board before 1200h on the day it will take effect, except that any change in the schedule of races will be posted by 1200h two days before it is to take effect.

7. Signals Made Ashore

7.1 Signals made ashore will be displayed from pole on the Clubhouse deck.

7.2 Code flag 'AP', Answering Pennant, with two sound signals (one sound when lowered) means the race is postponed. The warning signal for the first start will not be made less than 30 minutes after 'AP' is lowered.

8 Signals Made Afloat

Signals made afloat may be made from the committee boat or a mark boat and will be made in accordance with the Racing Rules of Sailing except that code flags S, N and Y, if displayed over one or more numeral pennants will apply only to the divisions indicated by the pennants.

9. Schedule of Races

BHYC Race Schedule 2011

Series 1 Tuesday

Series 2 Thursday

Race	Date	Sunset	P Chair	Race	Date	Sunset	P Chair
1-1	May 10	20:31	C Bantin	2-1	May 12	20:33	C. Bantin
1-2	May 17	20:38	R. Bissonnette	2-2	May 19	20:40	R. Bissonnette
1-3	May 24	20:45	G. Freeman	2-3	May 26	20:47	G. Freeman
1-4	May 31	20:52	D. Klick	2-4	June 2	20:53	D. Klick
1-5	June 7	20:57	D. Leonard	2-5	June 9	20:58	D. Leonard
1-6	June 14	21:01	J. MacCorkindale	2-6	June 16	21:02	J. MacCorkindale
1-7	June 21	21:03	G. Moffat	2-7	June 23	21:04	G. Moffat
1-8	June 28	21:04	S. Pedersen	2-8	June 30	21:04	S. Pedersen
1-9	July 5	21:02	E. Pilon	2-9	July 7	21:02	E. Pilon
1-10	July 12	20:59	M. Rowlinson	2-10	July 14	20:58	M. Rowlinson
1-11	July 19	20:54	M. Rowlinson	2-11	July 21	20:53	M. Rowlinson
1-12	July 26	20:48	M. Shannon	2-12	July 28	20:46	M. Shannon
1-13	Aug 2	20:40	G. Thompson	2-13	Aug 4	20:38	G. Thompson

Series 3 - Fall

Race	Date	Sunset	P Chair	Race	Date	Sunset	P Chair
3-1	Aug 9	20:31	C Bantin	3-2	Aug 11	20:28	R. Bissonnette
3-3	Aug 16	20:20	G. Freeman	3-4	Aug 18	20:17	D. Klick
3-5	Aug 23	20:09	D. Leonard	3-6	Aug 25	20:06	J. MacCorkindale
3-7	Aug 30	19:55	J. Pollock	3-8	Sept 1	19:52	M. Opitz

Series 3 Sundays

Race	Date	P Chair
3-9	Sept 11	E. Pilon
3-10	Sept 18	M. Rowlinson
3-11	Sept 25	M. Shannon
3-12	Oct 2	G. Thompson

10 Divisions, Classes and Fleet

10.1 A division is a group of boats with a common start. A Class is a group of boats that are scored together. A Class may have a separate start or may be grouped with one or more other classes within a Division.

Division	Class	Description	PHRF Rating	Flag
1	1	Spinnaker 3	ASP less than 131	Orange
2	2a	NFS 1	NFS-ASP over 190	White
	2b	Spinnaker 1	ASP 174 and above	Black
3	3a		Sharks	
	3b		S2 9.1	Blue
4	4a	NFS 2	NFS-ASP under 190	Yellow
	4b	Spinnaker 2	ASP 131 to 173	Green

10.2 A boat shall declare the class in which she intends to compete before the start of each series. Thereafter she may change only upon written request and subsequent written consent of the Rear Commodore-Sail. Such a request will only be granted once within a series. Any such change will not take effect until 48 hours after the written request is received. All races prior to the change in class will be discarded from all series results including class champion. A notice of the approved change of class will be posted on the Sailing Notice Board before 1200 hrs on the day it is to take effect.

10.3 Class Champion for a class shall be determined as described in SI 22.2, using all races sailed in that class except any discarded under 10.2

10.4 Fleet Champion shall be determined at the discretion of the Sail Committee based upon all races run by BHYC. For consideration, **a boat should have raced in at least three BHYC events other than** Series 1, 2 and 3.

11 Class Flags

Boats in Divisions 1, 2, 3b and 4 shall display the flag for the class in which they are competing from their backstay. Flags may be available for purchase at the club bar but in the event that none are available, it is the skippers responsibility to obtain one from alternative sources.

12 Helmsman

A boat must be helmed by her registered skipper/owner or by a regular member of her crew who must also be a member of BHYC.

13 Courses

(All courses are illustrated on pages 8-9)

13.1 The "A" Course will consist of a Triangle plus Windward-Leeward-Windward legs. (Except that boats in Division 1 will sail one full triangle before the final five legs). Mark #2, the gybe mark, will be positioned so as to define a triangle of approximately 45-90-45 degrees with the 90 degree angle at Mark # 2. The Start Mark will be set to leeward of Mark #3. The Finish Mark will be to windward of Mark # 1. The course will start between the Race Committee Boat and the Start Mark, rounding Marks #1, #2, #3, #1, #3 and to a finish line between the Finish Mark and the "moved" Race Committee Boat. (Division 1 will sail Start, #1, #2, #3, #1, #3, #1, #3, Finish.)

13.2 The "B" Course will consist of Windward-Leeward-Windward-Leeward-Windward legs. (Except that boats in Division 1 will sail three Windward-Leeward sequences before the final Windward leg.) Mark #2 will be an offset mark set approximately 40 yards from Mark #1 at an angle of approximately 90 degrees to the windward leg. The Start Mark will be set to leeward of Mark #3. The Finish Mark will be to windward of Mark # 1. The course will start between the Race Committee Boat and the Start Mark, rounding Marks #1, #2, #3, #1, #2, #3 and to a finish line between the Finish Mark and the "moved" Race Committee Boat. (Division 1 will sail Start, #1, #2, #3, #1, #2, #3, #1, #2, #3, Finish.)

13.3 The Course to be sailed (indicated by a letter "A", "B" and the approximate compass course to the first windward mark will be displayed on the side of the Race Committee away from the starting line.

14 Marks

The Start and Finish marks will be orange inflatable tetrahedrons. All other marks will be yellow tetrahedrons. In the event that a mark is missing or adrift, it may be replaced by a boat showing Code Flag "M" accompanied by a repetitive sound signal.

15 The Start

15.1 Races will be started in accordance with RRS 26. A numeral pennant (1 through 4) indicating the number of the next division to start will serve as the Warning Signal for that division. The failure of a sound signal shall be disregarded.

15.2 The starting line will be between a staff displaying an orange flag on the Race Committee Boat and the Start Mark indicated in section 13 of these instructions.

15.3 Boats whose Preparatory Signal has not been made shall keep clear of the starting line and of all yachts whose Preparatory Signal has been made.

16 Starting Sequence

The starting sequence for Club races shall be as follows:

Signal	Event	Scheduled Times	
		Tues & Thurs	Sunday
#1	Warning	1845	1300
#2	Start Division1	1850	1305
#3	Start Division2	1855	1310
#4	Start Division3	1900	1315
#5	Start Division4	1905	1320

17 Recalls

17.1 Individual recall will be signaled in accordance with RRS 29.2. Additionally, the race committee may broadcast a, boats over early message on Channel 9. **This is a courtesy which may or may not occur, and is not cause for Redress if it does not occur.**

17.2 When a general recall is signaled, there will be no interruption of the starting sequence. Recalled divisions will restart in their respective order at intervals of five minutes after the last scheduled start. **This changes RRS 39.3.**

18 The Finish

18.1 The finish line for a full course will be between the mast bearing the blue "on station" flag on the Committee Boat and the Finish Mark as indicated in section 13 of these instructions.

18.2 The finish line for a shortened course shall be in accordance with RRS 32.2.

19 Time Limit

19.1 The time limit for evening races is sundown, as shown in 9. Schedule of Races. If no boat finishes within the time limit, the race shall be abandoned. If one boat sails the course as required and finishes within the time limit, remaining boats shall be scored according to their finishing times until one hour after the time limit. Boats that have not finished within one hour of the time limit shall be scored DNF. This supplements Rule 35.

19.2 For Sunday races, boats that have not finished by 1630 hours will be scored DNF.

20 Retiring from a Race

A boat which retires from a race shall inform the Race Committee either directly or by radio (VHF channel 9) or by relay through another vessel. **Failure to do so may result in disqualification from the race in which she had her best previous finish in the series.**

21 Protests & Arbitration

21.1 Protest shall be written on forms available at the race office and delivered there within the protest time limit which will last 45 minutes and begin on the return of the committee boat to its slip after the last race of each day.

21.2 The location and times of protest hearings will be posted on the official notice board within 30 minutes of the protest time limit.

21.3 Protests will be heard in approximate order of receipt and as soon as possible.

21.4 For protests under a rule of Part 2 involving no more than 2 yachts and not involving damage or injury, there may be a short mediation hearing. Any Protest not resolved by this process will be referred to the Protest Committee for a full hearing

21.5 After the protest has been properly filed according to the SI's 17.1, one designated representative from each boat shall testify before a mediator. No witness's shall be permitted. The mediator will decide on the validity of the Protest(s). This changes rule 63.5.

21.6 A boat that accepts the opinion of the mediator that she has broken a rule, and accepts fault, shall receive a scoring penalty of 40%.

21.7 When a boat accepts a scoring penalty following a mediation hearing, her decision shall be binding to the other party to the Protest, and the Protest shall not be referred to the Protest Committee. This changes rule 63.1

21.8 The mediator may also approve the withdrawal of a Protest. This changes rule 63.1.

21.9 Once a Protest is heard in a full hearing the 40% scoring penalty is no longer available.

21.10 The mediator may attend the full hearing.

21 Scoring

22.1 Scoring in Class 3a will be by order of finish. Scoring in all other classes will be by finish times as corrected according to the 'time on time multipliers' as provided by PHRF-LO.

22.2 These series will be scored as provided in Appendix A of the Racing Rules of Sailing using the Low Point System, except that, in each of Series 1, 2 & 3, a boat's total score will be the sum of the scores for her 8 best races in that series (If less than 8 races are sailed in a series, a boat's score shall be the sum of her scores for all races sailed). For the Overall Series, a boat's score shall be the sum of the scores for her 20 best races in the entire season of Club Racing. **This modifies Appendix A2 of the RRS.**

22.3 The scoring modifications specified in Appendix A9 will apply to all races in these series.

23 Prizes

Prizes for each Class will be awarded for 1st, 2nd and 3rd in each series and overall.

2011 Course Options

Finish

Course "A"

There are two course options available to the Race Committee this season. They are 1-2-3-1-3-Finish

(Division 1 sails windward-leeward, windward, 3-Finish.)

(Division 1 sails extra windward-leeward (5 legs)

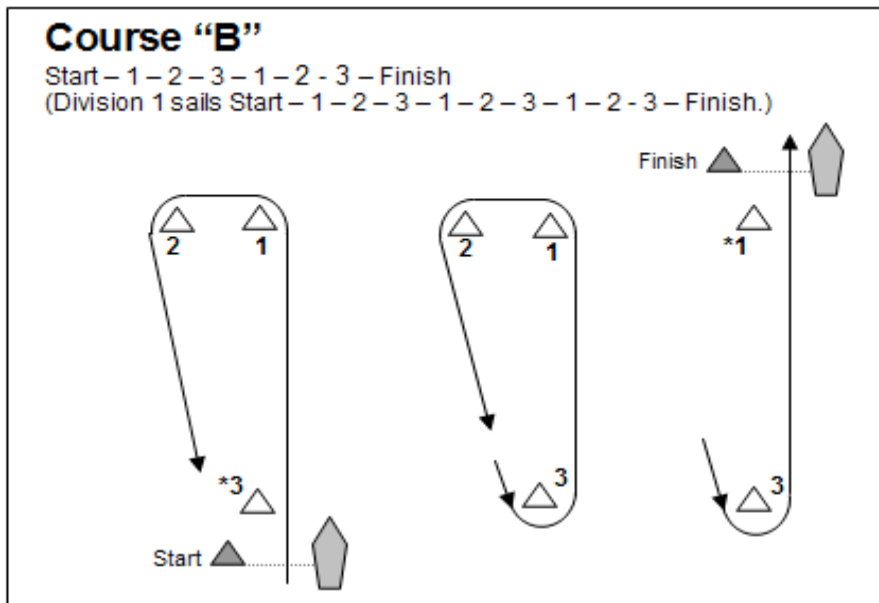
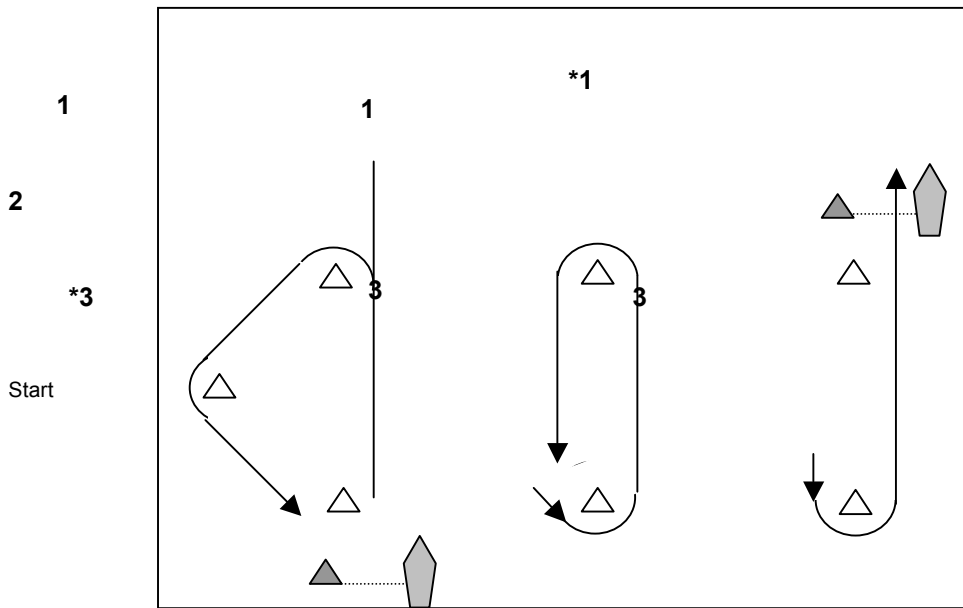
"B" Windward-leeward, twice around plus windward.

(Division 1 sails an extra windward-leeward.)

I

The start, finish and all rounding marks are to be left to port.

*Note: On all courses, mark #3 has no required side on the first leg.
Likewise, mark #1 has no required side on the final leg of a full course.



A Guide to Good Racing

Be thoroughly familiar with both the Racing Rules and the Sailing Instructions. Until you know the rules well, avoid close encounters. If all competitors are aware of the rules, the racing will be safer and better for all. Books of the Racing Rules of Sailing, 2008-2012 are available for purchase at the Club bar.

Check your safety equipment regularly. Make sure, that at the very minimum, you meet the legal requirements as listed in the 'Safe Boating Guide.'

Leave the harbour in time to get to the start line well before your warning signal. In order to start races on time, the mark boat will not be available for towing in the 20 minutes before the warning signal for the first division.

When possible, offer tows to and from the course to boats without power. Boats wishing a tow should have at least a 50' tow line ready and available.

Boats using the Club hoist or launch ramps should clear these slips immediately so that others may launch without being delayed.

The wearing of life jackets or PFDs is recommended for all participants (and required when code flag "Y" is flying.)

Well before the start sail close by the stern of the Committee Boat so that your sail number can be recorded. Be sure to notify the Race Committee if you are using a sail with a number different than your regular sail number.

Be considerate of other competitors. The rules require that a boat 'not racing' (i.e. one whose four minute signal has not yet been given or one that has either finished or retired) keep well clear of a boat that is racing.

Know the heading for all the legs of the course. The heading for the windward legs is posted on the Committee Boat. Leeward legs, of course, are the windward heading plus or minus 180 degrees. On an "A" course, the second and third legs are the windward heading minus 135 degrees and plus 135 degrees respectively.

If you feel you have been fouled, then protest. It is only by protesting that we can ensure compliance with the rules and, thereby, safer racing for all of us. If asked to serve on a protest committee, please agree. The experience will be most beneficial, to you and to the Club. If you are going to file a protest, make sure that you and your witness's are available to be present at the hearing ideally to be held the same evening/day.

2011 Race and Regatta Schedule

Black = BHYC regattas

Red = Other important Regatta

Blue = GHYRA Events

April 7	BHYC	Registration
April 30	BHYC	Launch
May 10	BHYC	First Club Race
June 3-4	PCYC	Susan Hood Overnight
June 4	BHYC	Sailpast
June 11-12	BHYC	TBA
June 18	BHYC	OTMH Regatta
June 25-26	RHYC	Rock the Hammer
July 1	BHYC	Barangas Race Day
July 2-3	NYC	C&C Owner's Regatta
July 9	BHYC	Easter Seals Regatta
July 9	BSBC	Convoy Cup Regatta
July 10	BSBC	Fred Gilbank Double
July 16	PCYC/OYS	Lake Ont. 300
July 23-24	YYC	Youngstown Level Regatta
July 25-31	PCYC	LYRA
July 29-31	PCYC	IRC Canadian Championship
July 31-Aug1	OYS	Oakville Regatta
August 6	BHYC	Crews Chance/Lady Helm
August 9	BHYC	First Fall Series Race
August 11-14	RCYC	IRC North American Champ.
August 13	OC	Oakville Club Regatta
August 14	OYS	GHYRA Jack Ward Single
August 27	FPYC-HBCN	GHYRA Peaches and Phrf Regatta
Sept 3-4	BHYC	Bronte Rocks Regatta
Sept 9-10	BHYC	Overnight
Sept 11	BHYC	First Sunday Race
Sept 17	BHYC	Pursuit Race
Sept 24	BHYC	Ontario High School Regatta
Oct 2	BHYC	Last Sunday Race
Oct 8	BHYC	Turkey Race
Oct 15-16	BHYC	Die-Hard Regatta
Oct ?	BHYC	Haulout
Nov 19	BHYC	Awards Night